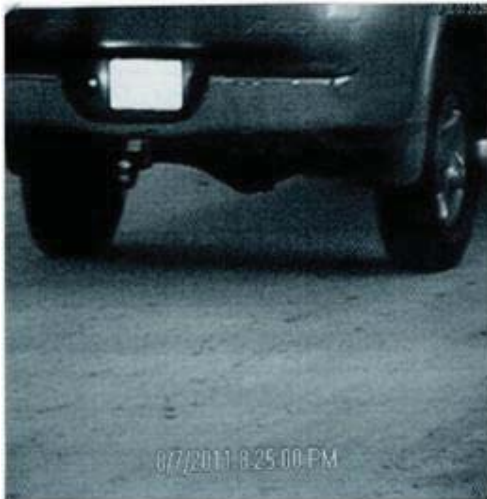


NOTICE

If you experience a license plate Reflection or Backlight as shown below, Set the Auto Iris setting to low under the lens setting in the On Screen Display.
(In the On Screen Display, go to MENU and Follow the Instructions Below)*.



Night View

STEP 1

DC IRIS MENU
BRIGHTNESS (40)
Go to **MENU**
Select **(2).LENS**
Select **Lens: DC IRIS**
Select **BRIGHTNESS**
Change to **40**

STEP 2

DAY/NIGHT MENU
(DAY)
Go to **MENU**
Select **(4).DAY/NIGHT**
Change to **DAY**

STEP 3

EXPOSURE MENU
AGC (OFF)
SHUTTER (1/250)
Go to the **MENU**
Select **EXPOSURE**
Select **(3).AGC**
Change Setting to **OFF**
Select **SHUTTER**
Change to **1/500**

STEP 4

3D DNR MENU
(OFF)
Go to **MENU**
Select **(7).3D DNR**
Change to **OFF**

*These adjustments are for distances between 30 and 60 Feet at an average of 50mph speed.

*For IR LEDs Intensity Adjustments for 30 or 60Feet, use the dial located on the board inside the housing.



*Please do not Reset to Factory Default. If you do, you must follow these steps to get the proper settings.
Also you must turn OFF the Wide Dynamic