

Using Network Traversal

IP Tool Dealer 1.8.2.7

IP Management tools

Device name	IP Address	Subnet Mask	Gateway	Data Port	HTTP Port	MAC	DHCP	Device Type	firmware version	Software Build Date	Kernel
name	192.168.226.201	255.255.255.0	192.168.226.1	9008	80	00:18:AC:37:64:19	not started	IP Camera	3.1.3	20130116	20120324

Dev. Name: name
 MAC Addr.: 00:18:AC:37:64:19
 Dev. Type: IP Camera
 Data Port: 9008

IP Tool Dealer 1.8.2.7

IP Management tools

Device name	IP Address	Subnet Mask	Gateway	Data Port	HTTP Port	MAC	DHCP	Device Type	firmware version	Software Build Date	Kernel
name	192.168.226.201	255.255.255.0	192.168.226.1	9008	80	00:18:AC:37:64:19		Camera	3.1.3	20130116	20120324

- browse with IE
- network setup
- Update Software
- Batch Update Software
- Update Kernel
- Update Configuration Files
- Ping This Ip
- Factory default


Dev. Name: name IP: 192.168.226.201
 MAC Addr.: 00:18:AC:37:64:19 Sub Mask: 255.255.255.0
 Dev. Type: IP Camera Gateway: 192.168.226.1
 Data Port: 9008 Build Date: 20130116

http://10.50.176.22/WebCam.html

Client version 2.1.0.6

User Name: admin
 Password: *****
 Bitrate type: 1 720P 30fps
 save the password

OK Cancel



*STEP-1: Network Config

1. Power up the IPC, get it into LAN.
2. Use IPtool to find it.
3. Browse with IE and login.

Then you have two ways to config the IPC's IP address, as following:

System Config

- Basic Information
- Date & Time

Video Config

- Camera
- Video Stream
- Time Stamp

Alarm Config

- Motion Detection Area
- Motion Detection Trigger
- Motion Detection Schedule

Network Config

- Port
- Wired**
- NET Traversal Config
- Server Config
- IP Notify
- DDNS config
- UPNP
- Mail config
- FTP Setting

Advanced Config

- User Config
- Security Config
- Config Backup & Restore
- Reboot
- Upgrade

Auto search network

Auto search network

IP Config

Obtain an IP address automatically

Use the following IP address

IP Address: 192 . 168 . 9 . 14

Subnet Mask: 255 . 255 . 255 . 0 Gateway: 192 . 168 . 9 . 1

Preferred DNS server: 192 . 168 . 9 . 1 Alternate DNS server: 0 . 0 . 0 . 0

PPPoE Config

PPPoE

User Name: Password:

Save

*STEP-1: Network Config

The first is config it by yourself to be a LAN connection, as shown in the red pane.
Then close the browser.

System Config

- Basic Information
- Date & Time

Video Config

- Camera
- Video Stream
- Time Stamp

Alarm Config

- Motion Detection Area
- Motion Detection Trigger
- Motion Detection Schedule

Network Config

- Port
- Wired**
- NET Traversal Config
- Server Config
- IP Notify
- DDNS config
- UPNP
- Mail config
- FTP Setting

Advanced Config

- User Config
- Security Config
- Config Backup & Restore
- Reboot
- Upgrade

Auto search network

Auto search network

IP Config

Obtain an IP address automatically

Use the following IP address

IP Address: 192 . 168 . 9 . 14

Subnet Mask: 255 . 255 . 255 . 0 Gateway: 192 . 168 . 9 . 1

Preferred DNS server: 192 . 168 . 9 . 1 Alternate DNS server: 0 . 0 . 0 . 0

PPPoE Config

PPPoE

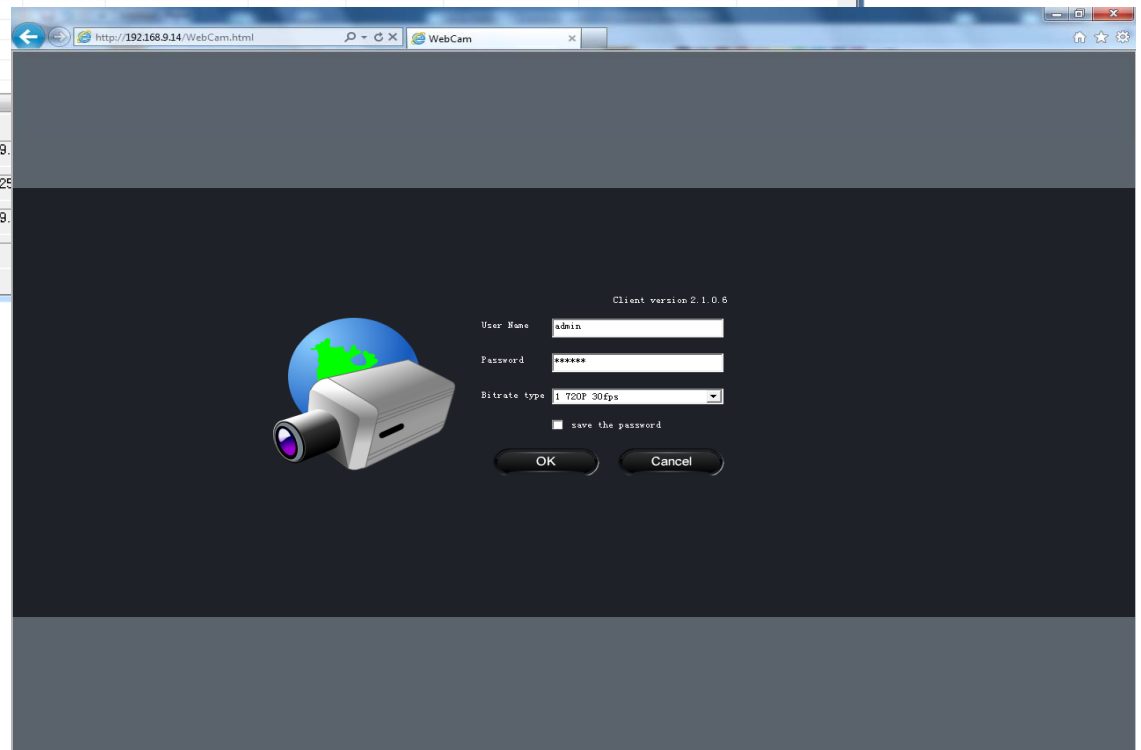
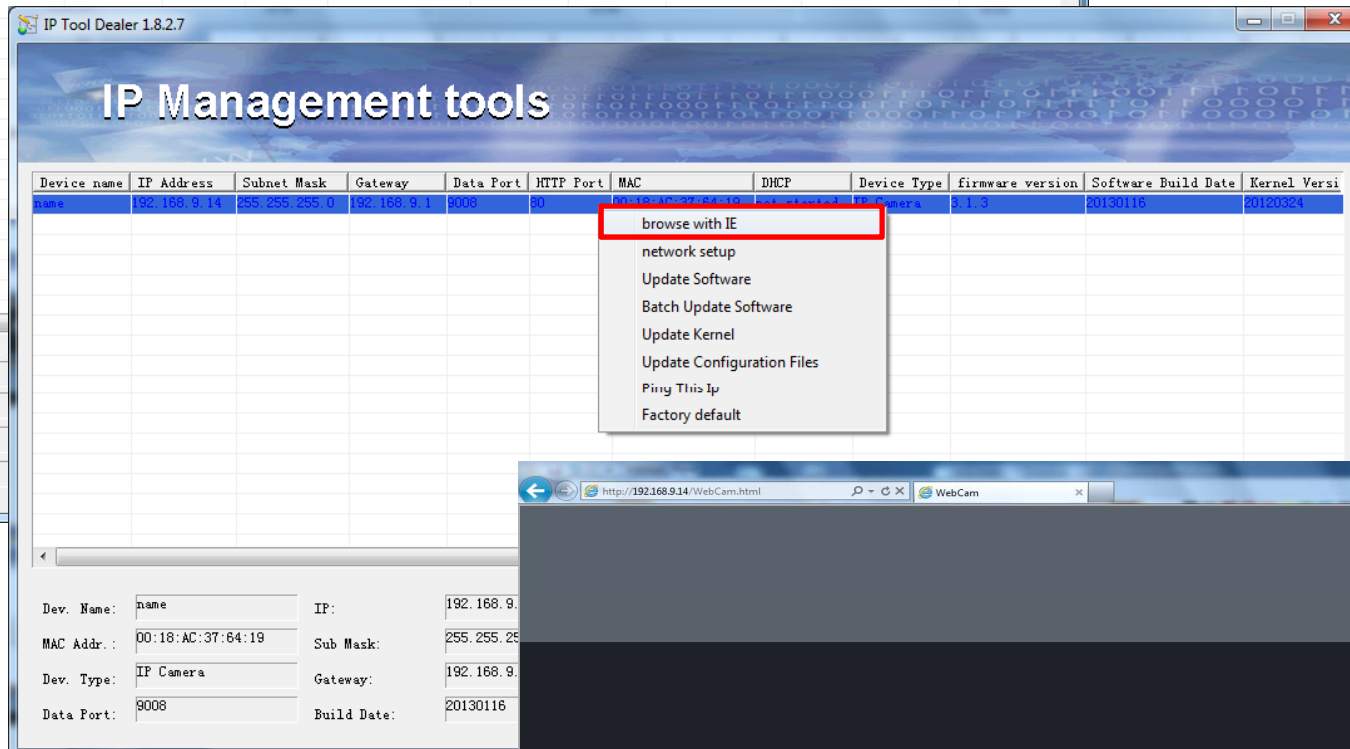
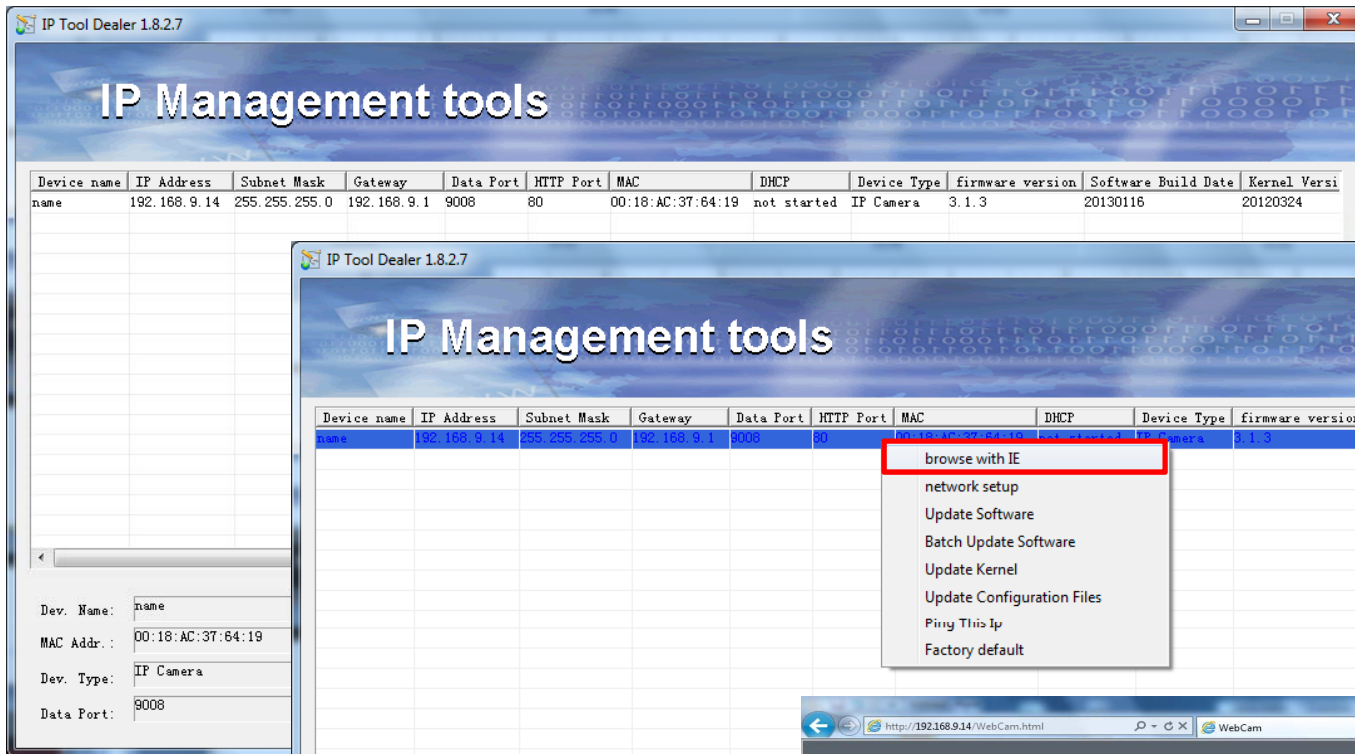
User Name: _____ Password: _____

Save

*STEP-1: Network Config

The second is using the “Auto search network” function, enable it and save.

Then close the browser.



*STEP-2: Enable the Function

Login with the new IP address, follow the steps shown above.

System Config

- Basic Information
- Date & Time

Video Config

- Camera
- Video Stream
- Time Stamp

Alarm Config

- Motion Detection Area
- Motion Detection Trigger
- Motion Detection Schedule

Network Config

- Port
- Wired
- NET Traversal Config
- Server Config
- IP Notify
- DDNS config
- UPNP
- Mail config
- FTP Setting

Advanced Config

- User Config
- Security Config
- Config Backup & Restore
- Reboot
- Upgrade

Transit

Transit enable

Serial Remember this serial No.!

Online status

user-defined name availability when on line

Save

*STEP-2: Enable the Function

Enable the transit function , remember the serial No., or the user-defined name you put in.

1. Access this website!

Client version 2.1.0.4

Device ID/User-defined name: 03630105

User Name: admin

Password: *****

save the password

OK Cancel

2. Fill the serial NO.(or user-defined name)!

*STEP-3. Access the Website

1. Access the website "www.upnpipc.com".
2. Fill the serial No. or the user-defined name and login.



WebCam

Config

Live



07/11/2013 07:49:00

7/11/2013 3:49:02 PM

Real-time Fluency Cache 500 ms



REC

