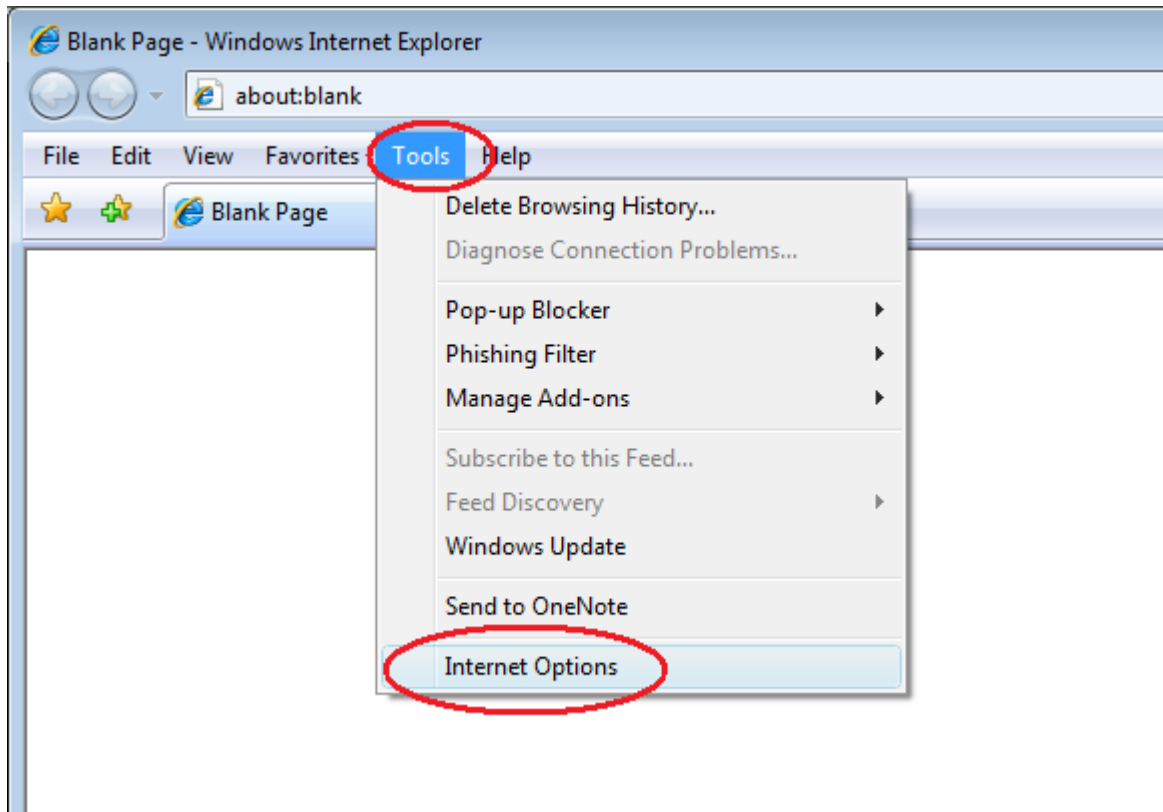


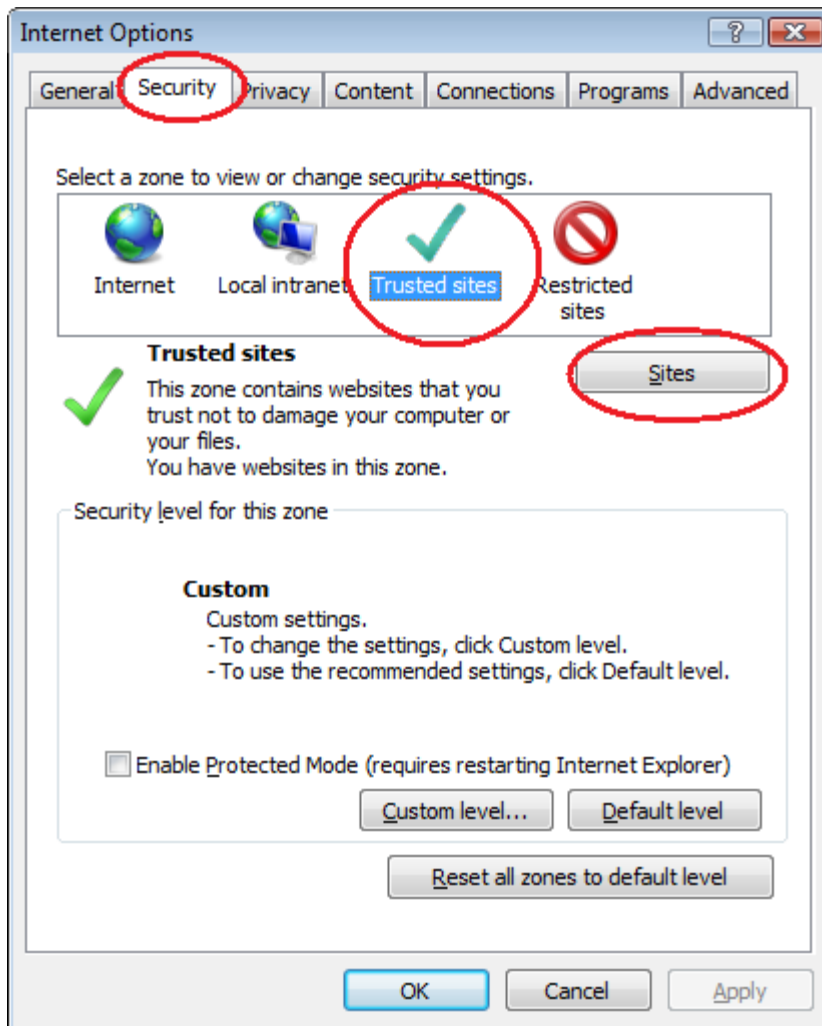
# ActiveX Settings for Windows

## 1. Setup ActiveX Control

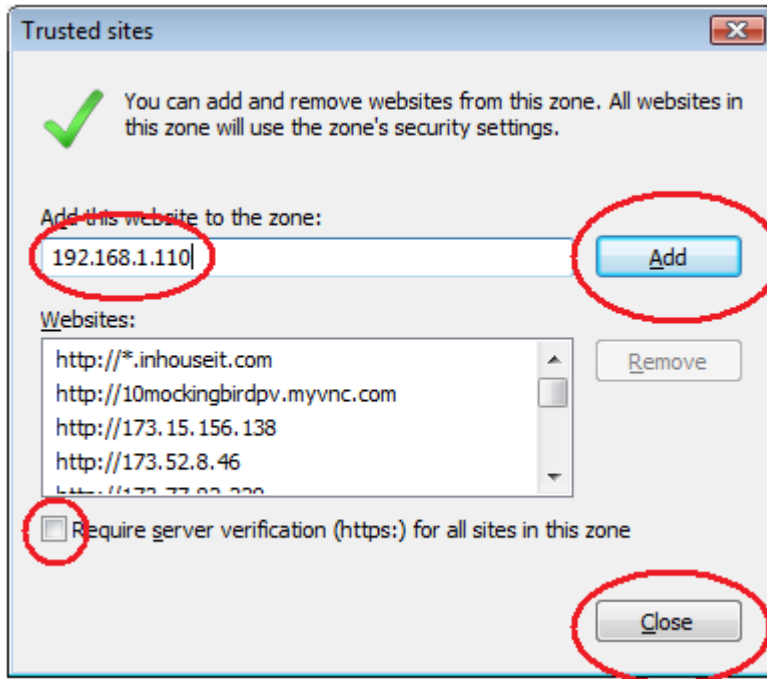
- a. Open Internet Explorer
- b. Click Tools
- c. Click Internet Options



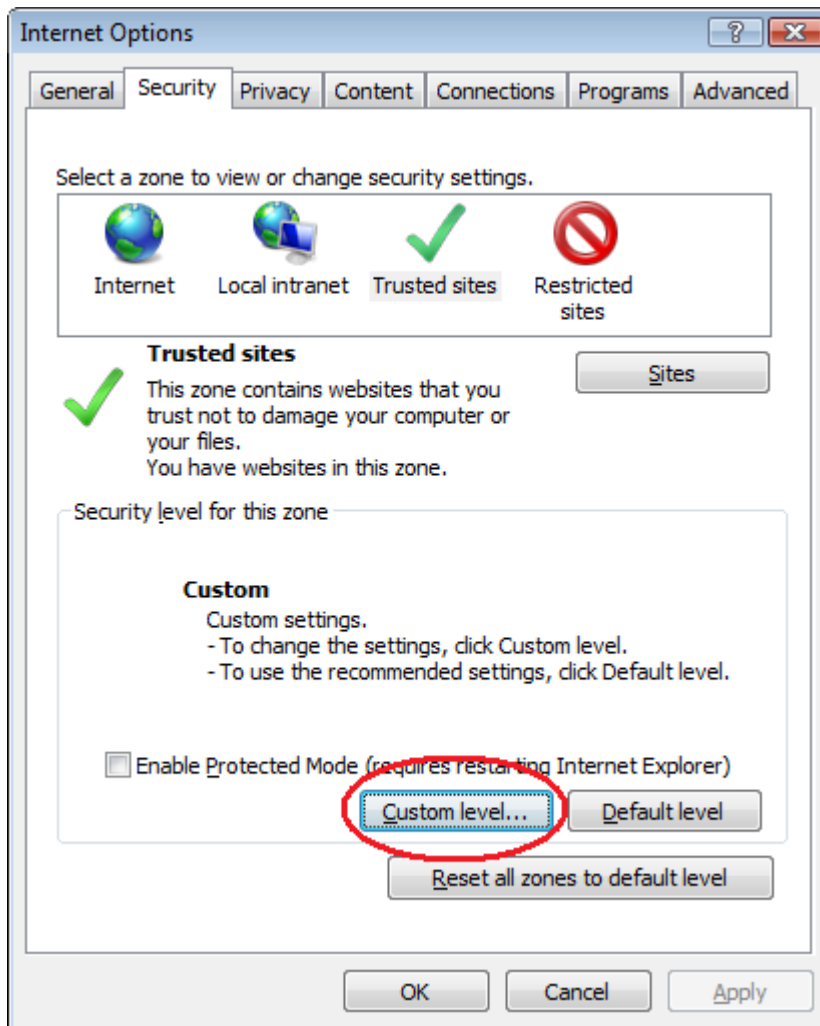
- d. Click on the Security Tab
- e. Clcik on Trusted Sites
- f. Click on the Sites button



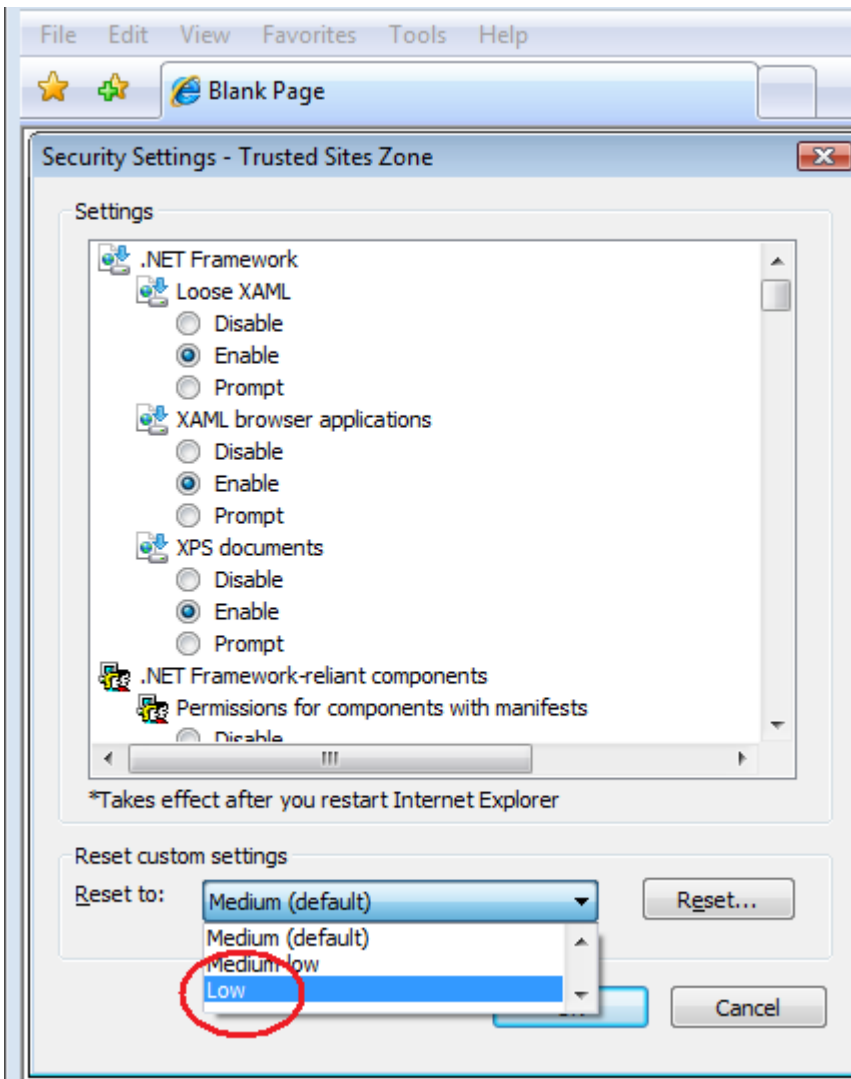
- g. Uncheck the 'Require server verification (https:) for all sites in this zone' box
- h. Type the DVR's IP address(example http://192.168.1.110) in the 'Add this website to the zone:' box
- i. Click the Add button
- j. Click Close



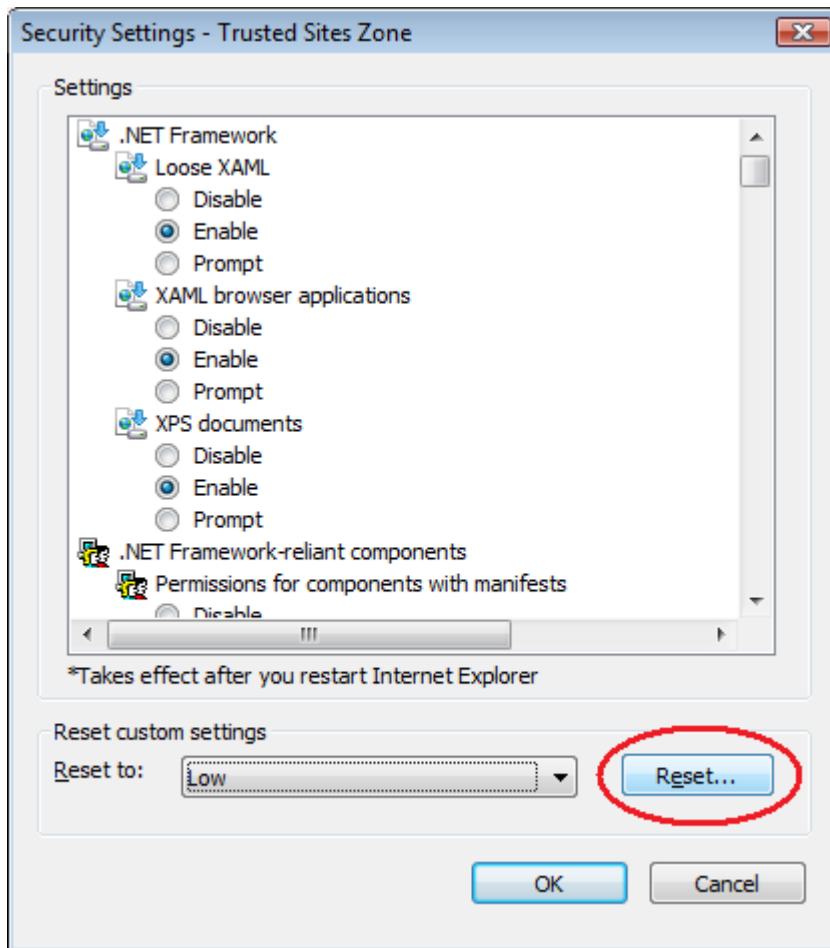
- k. Click the 'Custom level...' button



- I. Pull down the 'Reset to:' menu button and select Low



- m. Click the 'Reset...' button



- n. Click 'Yes' when asked: 'Are you sure you want to change the setting for this zone?'
- o. Click OK
- p. Click Apply
- q. Click OK
- r. Close Internet Explorer